

Medical marijuana dispensary proposed

Neighborhood associations consider Albany Street location

BY MICHELE D. MANISCALCO

Wellesley based Natural Health-care Inc. filed an application of intent with the Mass. Department of Public Health (DPH) in June 2015 for a cer-



Bob Minnocci at January 12 South End Forum meeting. Photo by Michele Maniscalco

Continued on page 2

App-Driven Wine Store Wins Approval

COURTESY
WWW.UNIVERSALHUB.COM

On January 14, the Boston Licensing Board today granted a package-store license to Wine Riot for its Web 3.0-enabled wine store at 519 Tremont Street.

The board accepted arguments from Tyler Balliet and Morgan First that there was a public need for a shop

that caters to users who want to help drive their inventory through app-driven reviews and histories of their own drinking habits, coupled with an emphasis on wine education.

The board rejected arguments from older South End residents and Mayor Walsh that that was just the wrong location for yet another wine store and that Tyler Balliet and Morgan First should look to set up shop in some

other area, like Newbury Street or Fort Point.

Although the two say they will focus on wine, the new license, if approved by the state Alcoholic Beverages Control Commission, will let them sell other types of alcohol. However, they did agree to a license restriction not to sell nips, pints or single bottles of beer.

The Theresa Show honors late artist, funds scholarship

BY MICHELE D. MANISCALCO

Approximately 100 artists and community members came together at United South End Settlements Harriet Tubman Gallery on Friday, January 15 to honor the life and work of the late fiber artist and Piano Factory resident



Photos courtesy of United South End Settlements

Continued on page 6

Service to Justice

St. Stephens
MLK action at
Blackstone School

BY SARAH O'CONNOR

On Monday January 18, in celebration of the Martin Luther King Day holiday, over 200 people from thirty organizations gathered at the Blackstone Innovation School for the Sixth Annual MLK Day of Action.

This day was organized collab-

oratively by St. Stephen's Youth Programs, the Blackstone Innovation School, City Year, the Massachusetts Service Alliance, and the B-PEACE for Jorge Campaign. Volunteers from the South End community, numerous AmeriCorps groups, and churches and other faith institutions from across greater Boston spent the day brightening hallways with colorful paint, organizing the school library (which is run by St. Stephen's and staffed by partner

Continued on page 4



St. Stephen's 6th annual MLK Day of Action. Photo courtesy of St. Stephen's

South End Political Forum

January 26th
7:00PM at the
Calderwood
Pavilion

The Ellis South End Neighborhood Association presents an evening with Senator Sonia Chang-Diaz, State Representatives Aaron Michlewitz and Byron Rushing and Boston City Councilor Bill Linehan at the Calderwood

Pavilion located at 527 Tremont. The forum will give constituents an opportunity to hear from our elected officials regarding legislative updates, plans for economic development, education, safety in our neighborhood ending with a Q & A.

If you have any questions you would like to submit to be addressed at the forum, please email us here info@ellisneighborhood.org, <http://www.ellisneighborhood.org/>

Snow 101

Visit www.mysouthend.com or www.cityofboston.gov/snow/parking for information.

Remember: Space Savers are not allowed in the South End.

Marijuana

Continued from page 1

tificate to operate a medical marijuana dispensary. Natural Healthcare listed Stephen Barber as its chief executive officer and provided a certificate of incorporation in Massachusetts dated June 2015 in its application. Natural Healthcare spoke to the Old Dover Neighborhood Association about its proposal in December and the Blackstone/Franklin Square Neighborhood Association (B/FSNA) at its January 19 meeting.

John Connelly of the Old Dover Neighborhood Association said that Old Dover heard a proposal from Natural Healthcare at their December meeting. Connelly said, "We decided to

defer any decision or substantive conversation in the interest of time and to let more people know about it." B/FSNA president Eric Huang had this to say via e-mail ahead of the Tuesday, January 19 meeting, which was to take place just after press time for this newspaper. "I have not heard much specific feedback on the proposal, but there is clearly general reluctance to introduce a new service into an area that is already oversaturated with services and drug abuse issues. Also, we just learned about the proposal at the South End Forum meeting last Tuesday and only received presentation material last night, which I distributed to our mailing list today, so people

Continued on page 5

NOW TWO LOCATIONS

House of Siam

Open for Lunch & Dinner
Come Experience our Beautiful Dining Room and the
Freshest Thai Cuisine in Boston

592 Tremont Street (near Dartmouth Street)
Take out is available from 11:30 a.m. to 11:00 p.m. daily
617.267.7426

542 Columbus Avenue
617.267.1755

REAL ESTATE

For everyone's safety

Please

JJ Bodner

Insurance Agency of Boston, LLC

8 Clarendon St Boston, MA 02116 617-437-9400 www.jjbodner.com

CAN'T WAIT UNTIL
THURSDAY FOR THE
NEXT ISSUE OF THE
SOUTH END NEWS?
HEAD OVER TO
MySOUTHEND.COM

PARKER HILL APARTMENTS

The Style, Comfort and Convenience you Deserve!

- Heat and Hot water always included • Modern laundry facilities • Private balconies/some with city views • Plush wall to wall carpet • Adjacent to New England Baptist Hospital • Secured Entry • Elevator Convenience
- Private Parking • Near Public Transportation and much more...

1 Bedroom available for \$1,600

Call today for more details and to schedule a visit:
888-789-8813

ASK ABOUT OUR MOVE-IN SPECIAL & NO SECURITY DEPOSIT PROGRAM

ASK DOG LADY



Advice on Pets, Life, Love

BY MONICA COLLINS

Dear Dog Lady,

My Yorkshire terrier, Riblet, is a dog of open adoption. This means my neighbor across the street who gave us Riblet a year ago when she couldn't handle him, believes it's perfectly acceptable to come over and collect him for overnight stays. I really don't mind all that much but she's starting to come later and later in the evenings. This does bother me. Riblet always comes back to us a little crazier than when he left, which makes me worry whether this back-and-forth situation is good for him. He recently bit the man who installed our kitchen tile and he's growling more than usual. What can I do to help the situation?

—Laura

Dear Laura,

Stop the spur-of-the-moment overnight visits. Riblet needs the security of one home. Your neighbor gave him up. This means, she abandoned responsibility. Now, you're the owner and set the visiting rules. Overnight stays should be limited to once a month if at all. Make sure you tell her Riblet chomped the tile installer. Dog fear always produces aggressive behavior such as biting. Little Riblet is wary and weary.

Small dogs' cuteness doesn't mean they should be coddled or indulged. Look in any shelter and the small dogs are usually the most vicious. Do whatever you can not to pick up Riblet and carry him like a toy. He's not.

Dear Dog Lady,

Dog walkers talking on cell phones drive me nutty. These yakkers ignore their dogs, other people and even traffic lights. The other day, a woman talking on her cell phone remained oblivious as her dog slipped out of its collar and nearly ran out into a busy street. If a posse of pedestrians, including myself, I hadn't grabbed the dog by the scruff of its neck and hauled it back from the brink, the poor animal might have been killed. Even then, the woman kept talking on her phone until I yelled, "Get off the damned phone, lady!" She put the collar back on the dog and scurried off. I've also seen people on phones ignore their dogs when the animals deposit waste on the sidewalks. Can you please advise all dog walkers not to talk on cell phones? There should be a law.

—Stephen

Dear Stephen,

Distracted people on cell phones are indeed a menace—in cars or with canines. Taking the dog for a walk is no excuse to talk or text. Such multi-tasking is grossly unfair to the dog, but, obviously, cell addicts don't get it. Dog Lady has seen cell-talkers commit any number of offenses—from leaving poop behind to ignoring dogs tangled in leashes. Dog Lady wishes she could wave a wand and make people stop. Alas, they will have to figure it out on their own.

Dear Dog Lady,

Over the holidays, when we were desperate for kid-friendly movies we saw "Marley and Me" on Netflix. Despite the family-friendliness, I cried at the end for all the dogs I've loved and lost. Why is it we only appreciate our dogs after they die and not when they're alive, chewing our stuff, throwing up on the rug, forcing us to take them out for walks?

—Brad

Dear Brad,

Many people love their dogs despite all the inconveniences. Dogs are the comic relief in life. They light up lives. They absorb human tensions. Dogs distract us from bigger problems.

"Marley and Me" (2009) does not seem dated because the book and the movie tell a simple story about a married couple who get a dog. The owners never train the animal responsibly so the dog rampages riotously through their lives chewing and running and getting into mischief until the end when Marley becomes sick and dies, leaving much love and many tears behind. Although Dog Lady believed in the over-arching theme of the movie—and the bestselling book—she never warned to the story of a naughty dog made worse by human disregard.

Dear Dog Lady,

Many people love their dogs despite all the inconveniences. Dogs are the comic relief in life. They light up lives. They absorb human tensions. Dogs distract us from bigger problems.

"Marley and Me" (2009) does not seem dated because the book and the movie tell a simple story about a married couple who get a dog. The owners never train the animal responsibly so the dog rampages riotously through their lives chewing and running and getting into mischief until the end when Marley becomes sick and dies, leaving much love and many tears behind. Although Dog Lady believed in the over-arching theme of the movie—and the bestselling book—she never warned to the story of a naughty dog made worse by human disregard.

—Lynda

Dear Lynda,

Conscientious people like you could save the planet. Yes, there is more you could do—although simply making the responsible effort to pick up after your dog is pretty good.

True biodegradable BioBags—available at Whole Foods, Amazon.com, Polka Dog Bakery or online at biobagusa.com—feel like light plastic but they are actually made resin derived from plant starches and other truly biodegradable materials. Sure BioBags cost a little more than plastic grocery bags but spending extra to contribute to a cleaner environment is priceless.

Go to www.askdoglady.com to read chapters from "Book of Shorty: A Little White Dog Leads Me Home" on the new blog.

News From...

Old Dover Neighborhood Association

Call for Board Nominations

Old Dover Neighborhood Association is 100% volunteer-based, and in need of neighborhood residents to get involved with the organization.

There are several open positions on the Board, and depending on the response received, we anticipate holding elections of the 2016 neighborhood board of directors at the next meeting on February 2.

To run for a position, simply send an email to info@olddover.org. You will receive a response from a current board member, who will be available to answer any questions.

If you would like to do more than just attend and read about neighborhood issues, please consider joining the Old Dover board or a committee. There is much to do, and

additional hands will lighten the load.

Submit your nomination to join the Board of Old Dover, by emailing info@olddover.org. (Please do so as soon as possible, and by Jan. 27.)

To vote or run for the board, you must be a current member of Old Dover. See below for membership information. Thank you!

Next Meeting of the Old Dover Neighborhood Association

Tuesday, February 2, 6:30 pm
at Project Place

Only current Old Dover members may vote. See below for link to membership online.

Have a question or an item to discuss... submit suggested agenda items at least one week prior to the meeting. Send to info@olddover.org

Get local and advertise your
property in the *South End News*.

Call Jeff at (617) 464-7280 ext. 202
or email: sales@southendnews.com.

Susan Reardon Fitness

Offering Master Personal Training & Nutrition and Lifestyle Coaching

When was the last time you talked with someone about your health and received the personal attention you deserve?

Are you ready to achieve consistent good health?

Are you ready to optimize your diet and fitness regime to reach your personal goals?



Susan Reardon Fitness is offering 60-minute Free Health and Fitness Assessments at Saldare Body Therapy. Learn about your eating best for your body and lifestyle and exercising efficiently to maximize and most importantly see and feel a difference.

For more information or to schedule your assessment please call
(617) 803-2948
or email at susan@saldarespa.com

www.susanreardonfitness.com • (617) 803-2948
susan@saldarespa.com • www.bostonhealthcoaches.com
twitter.com/SusanReardonFit • facebook.com/SusanReardonFitness
Find me on Yelp under Susan Reardon Fitness



BOSTON
REDEVELOPMENT
AUTHORITY

PUBLIC
MEETING

OPEN HOUSE/PUBLIC INFORMATIONAL SESSION

MONDAY, FEBRUARY 8 OR
WEDNESDAY, FEBRUARY 17
5:30 PM - 7:30 PM

ONE CITY HALL PLAZA
BRA Board Room, Room 900
Boston, MA 02201

PROJECT PROPONENT:

Boston Redevelopment Authority

PROJECT DESCRIPTION:

Learn more about recent changes to Boston's Inclusionary Development Policy, which creates income-restricted housing for moderate- to middle-income households in Boston. There will be two open house informational sessions offered which are open to anyone who would like to attend. There will be a brief presentation, a question and answer period, as well as more informal time to ask BRA staff about the policy.

MAIL TO: TIM DAVIS
Boston Redevelopment Authority
One City Hall Square, 9th Floor
Boston, MA 02201
PHONE: 617.918.4302
EMAIL: Tim.Davis@Boston.gov

BostonRedevelopmentAuthority.org

[@BostonRedevelop](https://twitter.com/BostonRedevelop)

Teresa Polhemus, Executive Director/Secretary



BOSTON
REDEVELOPMENT
AUTHORITY

IAG
MEETING

SIENA CONDOMINIUM- INK BLOCK

THURSDAY, JANUARY 28
6:30 PM - 8:30 PM

300 HARRISON AVE
One Ink- Ground Floor Lobby
South End, 02218

PROJECT PROPONENT:

National Development

PROJECT DESCRIPTION:

The Notice of Project Change (NPC) describes National Development's proposal to convert the originally proposed 73 rental apartments known as 5 Ink to the Siena Condominium, consisting of 76 home ownership condominium units. In December 2013, the BRA Board approved an NPC to divide the previously approved 156 residential units in Building Four at 30-36 Traveler Street into two buildings: 83 condominium units in 4 Ink, to be known as "Sepia, the Condos at Ink Block" and in a future phase, 73 rental units in 5 Ink. This new building, the last of 5 to be constructed at Ink Block, will be located at 40 Traveler Street in the South End.

MAIL TO: CHRISTOPHER TRACY
Boston Redevelopment Authority
One City Hall Square, 9th Floor
Boston, MA 02201
PHONE: 617.918.4259
EMAIL: Christopher.Tracy@boston.gov

CLOSE OF COMMENT PERIOD:
Monday, February 8, 2016

BostonRedevelopmentAuthority.org

[@BostonRedevelop](https://twitter.com/BostonRedevelop)

Teresa Polhemus, Executive Director/Secretary

St. Stephen's

Continued from page 1

church volunteers), building classroom storage space, and creating educational materials for lessons. A team also reclaimed the greenhouse from cacti that have been growing for more than four decades, creating areas for desert and temperate flora and preparing for spring science projects.

State Senator Sonia Chang-Diaz was there with her staff team. They worked with teens from St. Stephen's Youth Programs and Hidri Boston, an Eritrean youth group, to paint four murals of heroes with Puerto Rican heritage, including Supreme Court Justice Sonia Sotomayor and independence movement leader Dr. Ramon Betances.

These murals will be displayed in the Blackstone School entrance area to inspire students toward similar greatness. Senator Chang-Diaz said that being part of this Day of Action was an opportunity to live out King-like values by "praying with our feet."

During a community conversation to draw meaning from the day, participants reflected on the day's theme of moving from service to justice. Adults and teens spoke about applying lessons from their work and discussed this quote by the Rev. Dr. Martin Luther King, Jr.: "What is needed is a realization that power without love is reckless and abusive, and that love without power is sentimental and anemic. Power at its best is love implementing the demands of justice, and justice

at its best is love correcting everything that stands against love. And this is what we must see as we move on."

One teen shared her thoughts on why this Day of Action mattered: "[W]hen we all work together to make my school better, I see that my school matters to other people. I see that I matter to other people."

For more information about how you can build relationships with young people at the Blackstone Innovation School and in the South End, please contact Maureen Burns, St. Stephen's Youth Programs' School and Community Organizer at maureen@ststephensbos.org.



St. Stephen's 6th annual MLK Day of Action. Photo courtesy of St. Stephen's



37/2

Publishers:

Jeff Coakley [ext. 202]
Sue O'Connell [ext. 215]

Editor-in-Chief:

Sue O'Connell [ext. 215]
sue.southendnews@gmail.com

Editorial Design Manager:

Daniel J. Raps
danielj.raps@gmail.com

Contributing Writers:

C.D. Hermelin
Michele D. Maniscalco
Jack Maypole, MD
Dog Lady

Display Advertising:

Jeff Coakley [ext. 202]
jcoakley@southendnews.com

Classified Advertising:

classifiedads@southendnews.com

Letters to the editor:

letters@southendnews.com

Calendar listings:

sencalendar@southendnews.com

© 2015 South End News Inc.

PO BOX E14,
Boston, MA 02127
(617) 464-7280; FAX (617) 464-7286

The South End News is a copyrighted publication. Any stories or photos contained herein may not be reproduced in whole or in part without the express written permission of the publisher. The South End News will not assume financial responsibility for typographical errors in advertisements. Questions or complaints regarding advertising must be sent in writing to the billing department within seven days of publication in order for adjustments to be made to the account. We reserve the right to use our discretion in accepting or rejecting advertising copy. South End News is not responsible for damages due to typographical errors, except for the cost of replacing ads that have typographical errors caused by our negligence. South End News is published every Thursday.

www.southendnews.com

[Facebook.com/SouthEndNews](https://www.facebook.com/SouthEndNews)

SELIGMAN
DENTAL DESIGNS
Where personalized care & healthy, beautiful smiles meet.

Your full service dental office
SERVING THE SOUTH END SINCE 2007

**OFFERING EVENING
& SATURDAY HOURS**



James Seligman
DMD



Edward Wysocki
DMD



Valerie Smith
DMD, periodontist

1180 Washington Street, Suite 102, Boston 02118
617-451-0011 • www.southenddental.com

Get local and advertise your
property in the *South End News*.

Call Jeff at (617) 464-7280 ext. 202 or email: sales@southendnews.com

Animals Make People Better!

Office Hours By
Appointment
Mon. - Sat.

**South Bay
Veterinary Group**

The Charles Street
Animal Clinic
158 Charles Street
617-227-0153

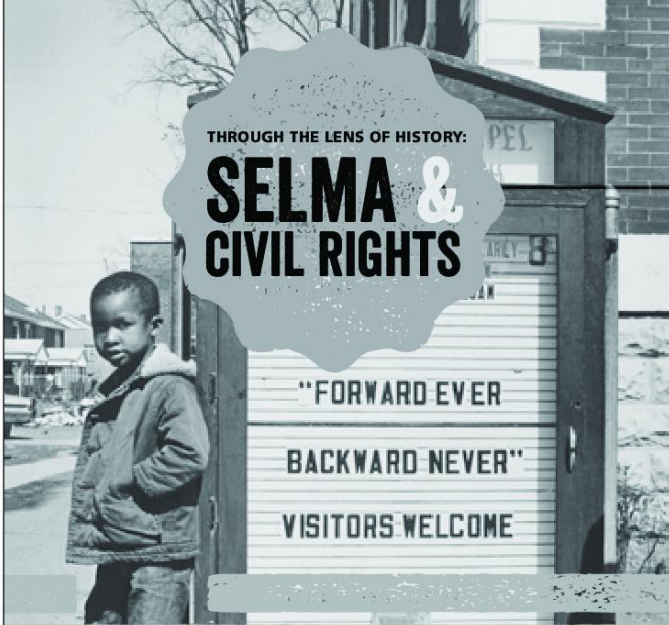
South Bay
Veterinary Group
587 Tremont Street
617-266-6619

NENPA
NEW ENGLAND NEWSPAPER & PRESS ASSOCIATION

SEBA
SOUTH END BUSINESS ALLIANCE

Letters policy

To be considered for publication, letters must be no longer than 500 words; refrain from extreme personal attacks; be signed and include an address and daytime telephone number. Writers should refrain from making incorrect statements since they may be barred from future issues. Deadline is noon Tuesday for Thursday's paper. To send us letters: Mail to 46 Plympton St., 5th floor, Boston, MA 02118; FAX to 617.464.7286; E-mail: letters@southendnews.com



THROUGH THE LENS OF HISTORY:

SELMA & CIVIL RIGHTS

"FORWARD EVER
BACKWARD NEVER"
VISITORS WELCOME

September 17, 2015 – February 27, 2016

Grand Circle Gallery honors the 50th anniversary of the civil rights march from Selma to Montgomery, through the photography of James H. Barker.

Free Admission Wed & Fri: 12–6, Thurs: 12–7, Sat: 10–5
gct.com/grandcirclegallery @GC_Gallery
 Handicap Accessible

Sponsored by The Lewis Family Foundation

347 CONGRESS STREET • BOSTON, MA 02210 • 617-346-6459

GRAND
CIRCLE
GALLERY

Theresa

Continued from page 1

joy a multi-media exhibit by local artists and to support the Theresa-India Young Ethnic Weaving Scholarship at Massachusetts College of Art and Design (MCAD). Guests nibbled appetizers and sweets accompanied by beer and wine and soft drinks courtesy of local businesses including Huntington Wine and Spirits, Foodie's Urban Market and Whole Foods while browsing the

Theresa-India Young, to en-

work and listening to music and presentations emceed by local art promoter and educator Jacqueline L. McRath. The Theresa Show will continue at the gallery at 566 Columbus Avenue through February 29.

Attendees included E. Barry Gaither, director of the National Center of Afro-American Artists; Susan Collings, executive director of the Art Connection; and Ann Wessmann, Chair of the Fibers Department at MCAD as well as friends and Piano Factory neighbors of India Young including McRath; Dorothea Guild; artists David Mynott,

Thom Donovan and Veronique-Anne Epiter were in attendance. Artist Lloyd R. Williams donated an acrylic painting of the CITGO sign and posed with the proud winner, Maria Ward. Epiter, a vocalist and music educator as well as a visual artist, read poetry and sang a selection to honor the Rev. Dr. Martin Luther King, Jr.

At press time, the total raised through the silent auction stood at over \$1,100 and will continue through February 29. Purchasers may also buy on the spot by paying market value plus ten per cent for each desired piece. Fifty per cent of the

proceeds from The Theresa show will go directly to the scholarship fund and the other 50 per cent will go to the artists. The Theresa-India Young Ethnic Weaving Scholarship was established in 2013, and 2015 winner Sarah Peloquin has five pieces on exhibit in this year's Theresa Show.

Those who wish to support the Theresa-India Young Ethnic Weaving Scholarship may also make a tax exempt donation to the Cross Cultural Collaborative, 45 Auburn Street, Brookline, MA 02146.



Photos courtesy of United South End Settlements



THE SOUTH END WRITES/THE LIBRARY INVITES

Award-winning short-story writer and novelist **Virginia Pye** will talk about her acclaimed second novel, **"Dreams of the Red Phoenix,"** about American missionaries in Japanese-occupied China in 1937, inspired by a family diary.

"This unflinching look at a brutal era in a faraway place shares truth in its own way."
— *Kirkus Reviews*

"Gripping, convincing, and heartbreaking, *Dreams of the Red Phoenix* is powerfully evocative of the complexities of life in 1930s China. A real page-turner and thought-provoker—wonderful."
— *Gish Jen, author of "World and Town"*

Tuesday, Jan. 26, 6:30 PM
South End Branch, BPL
Refreshments. Seating is limited.

The South End library is handicapped accessible. For more information, visit www.friendsofsouthendlibrary.org



SERVICE GUIDE

PLUMBING • HEATING • HVAC

S.G. Harold Plumbing, Heating & AC

Specializing in Viessman Boiler
Home Heating Repairs & Service
Unico Air Conditioning • Radiant Floor Heating

Boston 617-522-1000

Unprecedented Service Tailored To You
MA Lic # 10589

ROOFING



McDonnell Roofing Co. Roofing Specialist

Fully Insured

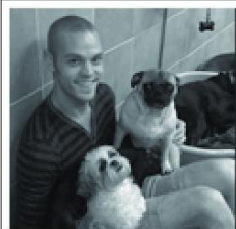
Slate and Copper Work - Rubber Roof Systems
Shingles and Gutters - Repairs - Lic. Contractor Reg. #100100

617-288-3448

Free Estimates • Over 40 years of experience

McDonnellRoofingBoston.com

PET CARE



NEED A PLACE TO PLAY?

**DJ DOG
& CAT SERVICES**

203.241.0674
Book your pet's stay today!

MASONRY

Rynne Masonry, Inc

20 Years of Experience Working with Clients in the South End
Specializing in all types of Brownstone Restoration

Brickwork • Repointing
Step Repair (Rebuild, Restore and Resurface)
Chimney Repair • Basement Flood Repairs

Fully Insured and licensed. Please call for references and work samples.
Francis Rynne 617-510-2775 or 617-783-0516



Fully licensed and insured
BBB accredited

RBUCKLEYMASONRY@YAHOO.COM

617-283-6691

WWW.RBUCKLEYCONSTRUCTIONINC.COM

FREE CONSULT AND ESTIMATES

REPOINTING
RESTORATION
BASEMENTS
URBAN LANDSCAPE
DESIGN/BUILD
CHIMNEYS
STEPS
CONCRETE
STONE
BRICK

BRUNO GUERRIERO CONSTRUCTION, INC.

Water Proofing Solutions

Basements • Facades • Chimneys



Emergency Repairs

Roofs & Walls • Clean Outs

COMPLETE MASON CONTRACTOR

Custom Brick, Stone Work & Brick Pavers

ALL TYPES OF REPAIRS AND RESTORATIONS

Flood Damage Repair • Brownstone Repair • Stairs Restored • Foundations

BrunoGuerrieroConstruction.com

Brunosworld@comcast.net

MENTION THIS AD, GET 10% OFF

HIC
REG#
268196

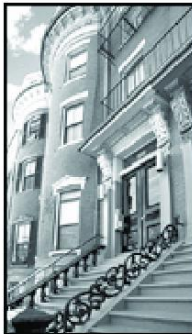
FULLY INSURED

(800) 444-5476

FREE ESTIMATES



MASONRY



P. Stones Contracting, Inc.

Specializing in Historic Restoration,
Brick Repointing, Brick, Block, Stone,
Basement Floors, Caulking & Waterproofing.

Ornamental window sills, window headers and moldings.

Fully licensed and insured. 15 years of satisfied customers and referrals.

Office: 781-848-6922 • Fax: 781-848-6923

Cell: 617-592-0850 • pstonescontracting@hotmail.com

CONSTRUCTION • GENERAL • REMODELING

The Dependable Handyperson

FINE PAINTING AND REFINISHING
SMALL REPAIRS AND RENOVATIONS

DECK AND GARDEN WORK

Call Jean at 617-236-1795

dependablehandy@aol.com

PRECISION WOODWORKING & GENERAL CONTRACTING

Commercial and Residential Builders

KITCHENS • BATHROOMS • ROOFING • DECKING • PAINTING
MASONRY • TILING • WINDOWS & DOORS • BUILDING RESTORATION
Finish Carpentry • Historic Windows • Slate and Copper Work

20 Years experience in the South End • Licensed & Insured
John O'Shea: 617-590-6650

WALDRON REMODELING FINE FINISH CARPENTRY

ROOFING • DECKS • PATIOS • CUSTOM KITCHENS
ADDITIONS • MASONRY • BRICK POINTING
BATHROOMS • BASEMENTS • GUTTERS • SIDING



PLEASE CALL MARK
617-699-7922

FREE ESTIMATES • FULLY INSURED
ALL WORK GUARANTEED
WE ACCEPT ALL MAJOR CREDIT CARDS

LICENSE #C283674
LICENSE #HIC13672

CLEANING SERVICES



Spring Cleaning For All Seasons

- Trustworthy cleaning services to meet your needs
- Houses, apartments and commercial
- Schedule that works best for you, weekly, bi-weekly, or monthly
- All routine housework, plus special clean-up jobs
- Owner supervised cleaning crew and ensures quality
- Excellent references and competitive rates

Cleaning by Judy 617-501-9645

ELECTRICAL



PROVIDING QUALITY
ELECTRICAL SERVICES
to the BOSTON AREA

Residential & Commercial

Free Estimates

24 Hour Service

Dedicated to Customer Service Since 1971

617.542.2000

www.ds-electric.com

Mass Licence #14580A

South End News

Service Guide Ads Get Results.

617.464.7280 • sales@southendnews.com

This season get the most for your money with these high CD returns!

16-MONTH CD**	1.35% APY*
25-MONTH*** BUMP-UP CD	1.41% APY*
48-MONTH CD	2.13% APY*

 **East Boston Savings Bank®**
800.657.3272 EBSB.com

*APY (Annual Percentage Yield) assumes interest will remain on deposit until maturity. Rate effective as of 12/1/15. Rate subject to change without notice. Substantial penalty for early withdrawal. Fees may reduce earnings. Minimum balance to open and obtain APY is \$1,000 and IRA is \$500. **Upon maturity, 16-Month CD will automatically roll into the then 18-Month CD rate and term. ***25-Month Bump-Up CD customer initiates one-time bump-up to the then current 24-Month CD for the rest of the term. Upon maturity, CD will automatically roll into the then 24-Month CD interest rate and term.

Member FDIC Member DIF



South End
Community Health Center

THE SOUTH END COMMUNITY HEALTH CENTER INVITES YOU TO JOIN US FOR OUR

2016 Annual Meeting

MONDAY, FEBRUARY 1, 2016

5:30 pm - 7:30 pm

At the South End Community Health Center
1601 Washington Street (3rd Floor)

KEYNOTE SPEAKER

~ Marylou Sudders ~

Secretary of the Executive Office of Health & Human Services
"Integrating behavioral health & substance abuse services"

Please confirm your attendance

RSVP at development@sechc.org, or call 857.206.7600.

Light fare and refreshments will be served.

To learn more about our services and programs,
please visit www.sechc.org.

The Law Offices of Donald E. Green

"Serious injuries require serious Attorneys"

With thirty (30) years experience, we concentrate in personal injury matters, wrongful death, medical and dental malpractice, pharmaceutical negligence, as well as criminal defense, civil rights, immigration matters, bankruptcy and sexual harassment claims.

Contact Attorney Donald Green or Attorney Annette Green at (617) 442-0050 or Toll Free (877) DON-GREEN. Legal inquiries can be sent to: dgreen@donaldegreen.com, agreen@donaldegreen.com. Also, visit us on the web at www.donaldegreen.com.

Conveniently located in Boston, on the South Shore and in Dudley Square, Roxbury:

- 2235 Washington Street in Roxbury (walk-ins welcome)
- Braintree (by appointment)
- Boston (by appointment)

We provide home and hospital visits.
Weekend and Evening appointments can be arranged



ANNETTE HILL GREEN

For all your legal needs,
call The Law Offices
of Donald E. Green

We speak Spanish, Portuguese,
Haitian Creole, Chinese and Cape Verdean



DON GREEN

Free ATMs anywhere in the USA with your **Platinum Checking Account¹**

Plus six more savings benefits:

- Free basic check order
- Free stop payments on checks
- Free money orders, travelers' checks and treasurer's checks
- No charge for incoming wires
- Free small safe deposit box for one year²
- Our best rates on Certificates of Deposit

Take advantage of this great opportunity!

Call **800-698-BANK (2265)**, visit **BankAtCommerce.com**
or stop by any of our convenient locations.



Commerce Bank™



¹ Customers must maintain a minimum combined deposit balance of \$25,000 in one or more Commerce Bank accounts and have a checking account. If your account balances falls below the required combined minimum balance of \$25,000 there will be a \$15.00 monthly service charge. See personal banker for terms & conditions.
² Annual fee waived for one year on either a 5x5 safe deposit box at our Fenway branch or 3x5 safe deposit box at any of our other locations, or \$40 credit applied to another rental for one year. Commerce Bank is a registered service mark in Massachusetts of Commerce Bank & Trust Company. ©2016 Commerce Bank & Trust Company. Commerce Bank member FDIC. Equal Housing Lender. All rights reserved.