

Reminder: Street Sweeping Is Now

BY SOUTH END STAFF

Boston's South End residents saw return of street sweeping on March 1.

While most of Boston starts street sweeping in April, the South End and other downtown areas begin the annual cleanup program on March 1. The Public Works Department will implement a grace period during the first week of March, placing flyers on vehicles rather than issuing tickets or towing.

However, beginning the second week of March, the ticket and tow

program will resume. Residents are urged to check street signage for specific sweeping schedules and move their vehicles accordingly to avoid penalties.

Public Works is asking for community cooperation as the program begins. Residents able to do so are encouraged to sweep debris from tree wells, sidewalks, and entrances into the street before mechanical sweeping takes place. Additionally, loosening accumulated winter debris from curbs will help make the cleaning process more effective.

Residents can sign up for free street sweeping, street occupancy, and towing alerts through the city's notification system here: www.cityofboston.gov/publicworks/sweeping.

Serial Bank Robber Arrested Again for Multiple Bank Heists

BY SOUTH END NEWS STAFF

A 44-year-old man with a history of bank robberies has been arrested once again for allegedly robbing two banks in Boston, including one he had previously targeted, according to the Suffolk County District At-

torney's office.

Jeremy Woodley, who was released earlier this month after serving a seven-year prison sentence for bank robbery, was arraigned on Wednesday, February 26, in Boston

Continued on page 4

Dine Out Boston Winter Edition Underway

BY SOUTH END STAFF

The winter edition of Dine Out Boston is now in full swing through March 15. Restaurants throughout the city are offering discounted prix fixe menus, allowing diners to experience new culinary offerings at affordable prices.

Participating restaurants are offering lunch options ranging from \$22 to \$36 and dinner selections from \$36 to \$55 per person.

Dozens of establishments around the city are taking part, with options spanning from casual vegan eateries to upscale Italian dining experiences.

Among the participating South End Business Alliance member restaurants are Reunion BBQ and Boston Chops.

This limited-time event provides an excellent opportunity for Boston residents and visitors to explore the city's diverse dining scene. Bon appétit!

Boston Ballet's "Swan Lake" Soars with Fresh Elegance and Technical Brilliance

BY JULES BECKER
Contributing Writer

As an iconic part of classical ballet repertoire, "Swan Lake" continues to be a challenge for any contemporary choreographer not surprisingly, Boston Ballet artistic director Mikko Nissinen combined tradition — namely the choreography of Marius Petipa and Lev Ivanov — and added choreography of his own in his reshaped 2014 edition. Now Boston Ballet returns to this Tchaikovsky — scored masterpiece at the Citizens Opera House.

The latest edition once again demonstrates not only the very high caliber of principal dancers but also the remarkable strength of the company corps. Even ballet

Continued on page 4

Swan Lake,
Boston Ballet, Citizens Opera House, Boston,
through March 16. 617-695-6950 or BostonBallet.org



Boston Ballet in Mikko Nissinen's "Swan Lake" at the Citizens Opera House. Photo by Theik Smith.

'A Man of No Importance' Celebrates Community Through Powerful Dublin Tale

BY JULES BECKER
Contributing Writer

A Man of No Importance,
SpeakEasy Stage, Roberts Studio, Calderwood Pavilion,
Boston Center for the Arts, through March 22.



Eddie Shields plays the role of Alfie Byrne in "A Man of No Importance" at SpeakEasy Stage. Photo courtesy of Nile Scott Studios.

A city is often a character all its own in a musical. So it goes with the place of New York City in much of the great Broadway musical "Ragtime". Composer Stephen Flaherty, lyricist Lynn Ahrens and the late playwright Terrence McNally do the same for the city of Dublin in their Off-Broadway musical "A Man of No Importance". Paul Daigneault, in his last production as SpeakEasy Stage's artistic director, is making the great Irish city come to vivid life at the Calderwood Pavilion.

Having chosen this 2002 gem "in part for its celebration of theater as community" Daigneault has brought together a veritable Who's

Continued on page 4

CHECK FOR BREAKING NEWS DAILY @ MYSOUTHEND.COM

FOLLOW US! @SOUTHENDNEWS



LIKE
SHARE
FOLLOW

LOEG

LAW OFFICES
Donald E. Green, P.C.

Everyone is going **GREEN!**

For all your legal needs, call the Law Offices of Donald E. Green.

We concentrate on personal injury matters as well as criminal defense, civil rights, immigration matters, wills & trusts, Chapter 7 bankruptcy, real estate and sexual harassment claims.

Please call **Attorneys Don or Annette Green**

at (617) 442-0050 or
email dgreen@donaldegreen.com
or agreen@donaldegreen.com

**After more than 30 years
in Dudley Square
we have moved.**

**Washington Park Mall (less than a mile
from our previous location)**



Don Green

**330 Martin Luther King
Boulevard, Roxbury**



Annette Green

SOUTH END CALENDAR

Wednesday, March 12, 2025

Free Bike Repair at BCYF Blackstone
3:30pm-5:30pm
BCYF Blackstone
50 West Brookline Street

- Medicaid and health insurance applications
- Pay delinquent excise
- Pay excise tax
- Pay parking ticket
- Pay real estate tax
- Referrals for ASAP services
- Register dog license
- Register to vote
- Request birth certificate
- Request death certificate
- Request marriage certificate
- Resident parking sticker
- SNAP applications
- Farmers market coupons (Seasonal)
- Income Eligible Reduced Fare T Program
- Yard Waste Stickers

Friday, March 14, 2025

South End and Bay Village Liaison Office Hours
South End and Bay Village Coffee Hours are hosted by your neighborhood liaison Sarah Sharpe.
11:00am-12:00pm
Cacao
570 Columbus Ave

Tuesday, March 18, 2025

City Hall On The Go: South End
Services available:

- Absentee ballot request
- Affidavit resident sticker
- Appeal parking ticket
- Basic Inspectional Services
- Business Certificate (Check or Money Order Only)
- Census registration
- File housing discrimination claim
- File domestic partnership
- Handicap parking

Saturday, April 5, 2025

Dog Licensing And Low-cost Rabies Clinic South End
10:00am-2:00pm
Animal Rescue League of Boston
10 Chandler Street
South End, MA 02116

ENRICH. ENGAGE. TOGETHER.



Goddard House offers residents enriching everyday experiences aimed at promoting independence, inspiring curiosity and encouraging connection with others.

- Spacious studio, one & two bedroom apartments
- Concierge-style services & wellness offerings
- Award-winning brain healthy cuisine
- Expansive dining, fitness, technology & outdoor amenities
- Onsite rehabilitation services
- SAGECare Accreditation for LGBT Cultural Competency
- EnrichedLIFE experiences and adventures
- Olmsted Memory Support programs backed by research and designed to treat the symptoms of Alzheimer's disease
- Unique short-term and trial stay option with "no minimum stay" requirement! Stay as long or as short as you need.

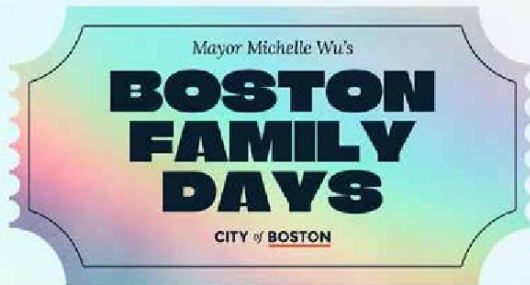


175 Years
1849-2024
GODDARD HOUSE
ENRICH. ENGAGE. TOGETHER.

165 Chestnut Street,
Brookline, MA
GoddardHouse.org



Call to schedule a tour! 617.731.8500



Every first and second Sunday of the month, Boston families can visit nine amazing cultural institutions for free.

- JOHN F. KENNEDY PRESIDENTIAL LIBRARY AND MUSEUM
- MUSEUM OF AFRICAN AMERICAN HISTORY
- ISABELLA STEWART GARDNER MUSEUM
- INSTITUTE OF CONTEMPORARY ART
- BOSTON CHILDREN'S MUSEUM
- NEW ENGLAND AQUARIUM
- MUSEUM OF FINE ARTS
- MUSEUM OF SCIENCE
- FRANKLIN PARK ZOO

Sign up & learn more at Boston.gov/FamilyDays.
Boston Public Schools students are pre-registered for Boston Family Days.

CITY of BOSTON



Mayor Michelle Wu



City of Boston Arts and Culture



Residential / Commercial

"When it comes to painting and carpentry, we're the Angels you've been looking for."

Cell: (781) 640-5590

Office: (508) 270-6841

Tim@angelpainting.net

www.angelpaintinginc.com

A Man of No Importance

Continued from page 1

Who of Boston musical theater talents and technicians in what is easily one of the best efforts already this year.

Set in 1964 Dublin, "A Man of No Importance" centers on a simple bus conductor named Alfie Byrne and the two joys of his life—namely the poetry of great Irish writer Oscar Wilde and the amateur productions he stages with St. Imelda Players, his local theater troupe. Playwright McNally sharply builds a confrontation between Byrne and local bigots—including church officials trying to shut down his latest production—the controversial Wilde play "Salome." While local performers fondly remember Byrne's earlier efforts with Wilde's comic masterpiece "The Importance of Being Earnest," they react very differently to "Salome"—with its provocative dance of the seven veils and controversial portrayal of John the Baptist.

Early on Byrne develops an unspoken crush for bus driver Robbie Fay—an attraction he realizes is in effect the 'love that dare not speak its name.' Along the way, he experiences an ongoing sibling conflict with his sister Lily and a difficult difference of views with homophobic butcher Carney. The entrance of a somewhat mysterious passenger named Adele—played with just the right vulnerability by Rebekah Rae Robles—suggests a serendipitous choice for the title role of the Wilde play. Will Alfie remain closeted? What will happen

to his friendship with Robbie? What will be revealed about Adele? The answers to these and other questions in this lively and often moving musical are orchestrated with Ahrens and Flaherty's insightful and sometimes humorous score.

Director Daigneault has smartly configured the Roberts studio as a thrust area so that audience members on all three sides seem to become both spectators and residents in the musical's richly detailed Dublin. Designer Jenna McFarland Lord has provided ample detail for St. Imelda's theater space—with a busy backdrop of books and related items—as well as the pub that Alfie and community members frequent. Karen Perlow strikingly lights the backdrop at moments of particular insight.

Choreographer Ilyse Robbins provides a rich variety of Irish dancers that reflect the exuberance of Dublin. Music director Paul S. Katz captures the poetic music of the city and Alfie's lyrical approach to life. Kudos also go to the multi-talented cast members—who play a variety of instruments on stage in this New England premiere of

the recently reimagined version of the show, as presented by Classic Stage Company in New York.

Most of all, the superb cast keep the emotional conflicts and the very meaningful score in arresting display. Gifted Eddie Shields captures all of Alfie's warring feelings about relationships, religion and love. His renditions of "Love Who You Love" and "Welcome to the World" are both heartfelt and vocally robust. Aimee Doherty has all of Lily's tough love and essential caring for Alfie. Her duet with disturbingly judgmental Carney on "Books" makes the most of the humorous song's clever use of rhyme. Keith Robinson finds Robbie's charm and easygoing nature. Will McGarrahan brings appropriate majesty and flamboyance to Oscar Wilde as Alfie imagines seeing the Bard of Dublin who inspires him.

"A Man of No Importance" resonates even more strongly in an age of resurging hate. SpeakEasy Stage's very timely revival not only compellingly validates the title bus conductor but also makes an important statement about community and caring.

Choreographer Ilyse Robbins provides a rich variety of Irish dancers that reflect the exuberance of Dublin. Music director Paul S. Katz captures the poetic music of the city and Alfie's lyrical approach to life.

Swan Lake

Continued from page 1

aficionados will be thrilled by the freshness and excellence of the current revival.

Nissinen added a short prologue to the four act ballet — one that foreshadows the blossoming romance between Prince Sigfried and the beautiful swan Odette. As always, the handsome young prince is given a crossbow as a present on reaching the age of twenty-one. At Swan Lake — so named because it had been formed by the tears of parents crying for their daughters who had been turned into swans — the prince becomes entranced with the same swan from the ballet's prologue. His attentive mother — intent on matching him up as soon as possible — invites six eligible princesses to the castle to parade in front of her son. While Sigfried dances and briefly socializes with the six out of respect for his mother, he refuses to pair up with any of the princesses.

In the pivotal third act, the menacing sorcerer Von Rothbart tricks Sigfried into thinking that his daughter Odile is the perfect match. At the same time Odette is seen moving sadly at a window above. Eventually the prince realizes his error and joins up with Odette only to finally pursue her into the Lake after vanquishing the sorcerer.

Even though the ballet stretches over two hours and thirty-five minutes in length with one intermission, audiences should not be looking at their watches. Nissinen and his very talented dancers prove amazing in their technique as they balance speed and spirit in his smartly streamlined version. Sangmin Lee makes an elegant prince, and Viktorina Kapitonova has the majesty of Odette and the enticing air of Odile (casts alternate throughout the run). Lee leaps with good height and makes wide turns in his solo sequences. Kapitonova captures the poetry of Odette and the bewitching moves of Odile. Lee and Kapitonova display strong chemistry during their

dramatic moments as well as their romantic pairings. Lasha Khozashvili moves with great menace as Von Rothbart.

As in the 2014 edition, there is an embarrassment of riches in the many distinctive configurations. Look for very impressive efforts by Lia Cirio and Daniel R. Durrett in the third act pas de cinq. Equally vivid are the castle ballroom sequences entitled Spanish Dance, Czardas, Neapolitan and Mazurka — all very colorfully attired by costume designer Robert Perdziola. Most of all, there is the stunning dance by the swans themselves — especially on their initial entry and final exit. The Boston Ballet Orchestra, under the inspired conducting of Mischa Santora, does full justice to both the reflective and rousing sections of Tchaikovsky's moving score.

Boston Ballet is slated to bring Nissinen's "Swan Lake" on tour to Los Angeles' Music Center in June. This first rate revival deserves immediate attention from local ballet buffs before other cities delight in its many treasures.

Bank Robber

Continued from page 1

Municipal Court. A judge ordered him held without bail pending a dangerousness hearing scheduled for March 3.

Prosecutors allege that on Thursday, February 20, Woodley entered what is now a Berkshire Bank branch at 1320 Washington Street in the South End—the same location he had robbed in 2016 when it operated as a Commerce Bank branch.

According to the District Attorney's office,

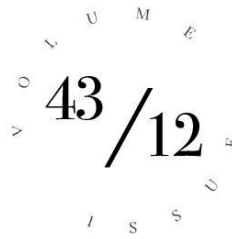
"The teller reported that an unknown male, later identified as Woodley, entered the bank and handed the teller a note stating 'I have a gun, comply with my demand. No one will be hurt. I want all loose bills. 100s, 50s and 20s, no dye packs or tracers.'" The teller provided Woodley with \$500 before he fled on foot along Washington Street.

Investigators later learned that prior to the robbery, Woodley had entered Empire Loans at 1130 Washington Street and asked to use a pen, which he reportedly used to write something on a piece of paper before heading toward the

Berkshire Bank.

The following day, authorities say Woodley robbed a Citizens Bank located at 580 Washington Street in Downtown Crossing, also escaping with \$500 before fleeing toward Chinatown.

"Investigators used video surveillance from nearby businesses and MBTA stations to identify Woodley. Woodley is seen counting money on video," the District Attorney's office stated. He was located and arrested on Tuesday in Dorchester by members of the FBI's Violent Crimes Task Force and Boston Police.



Publishers Emeritus:

Jeff Coakley
Sue O'Connell

Editor-in-Chief:

Sue O'Connell
sue.southendnews@gmail.com

Editorial Design Manager:

Julie Walker Palmer

Contributing Writers:

Julie Becker

Letters to the editor:

letters@southendnews.com

Calendar listings:

sencalendar@southendnews.com

Display Advertising:

sales@baywindows.com

Classified Advertising:

sales@southendnews.com

© 2025 South End News Inc.

PO BOX E14,
Boston, MA 02127

The South End News is a copyrighted publication. Any stories or photos contained herein may not be reproduced in whole or in part without the express written permission of the publisher. The South End News will not assume financial responsibility for typographical errors in advertisements. Questions or complaints regarding advertising must be sent in writing to the billing department within seven days of publication in order for adjustments to be made to the account. We reserve the right to use our discretion in accepting or rejecting advertising copy. South End News is not responsible for damages due to typographical errors, except for the cost of replacing ads that have typographical errors caused by our negligence.

South End News is published every other Thursday.

www.southendnews.com

Facebook & X

@southendnews

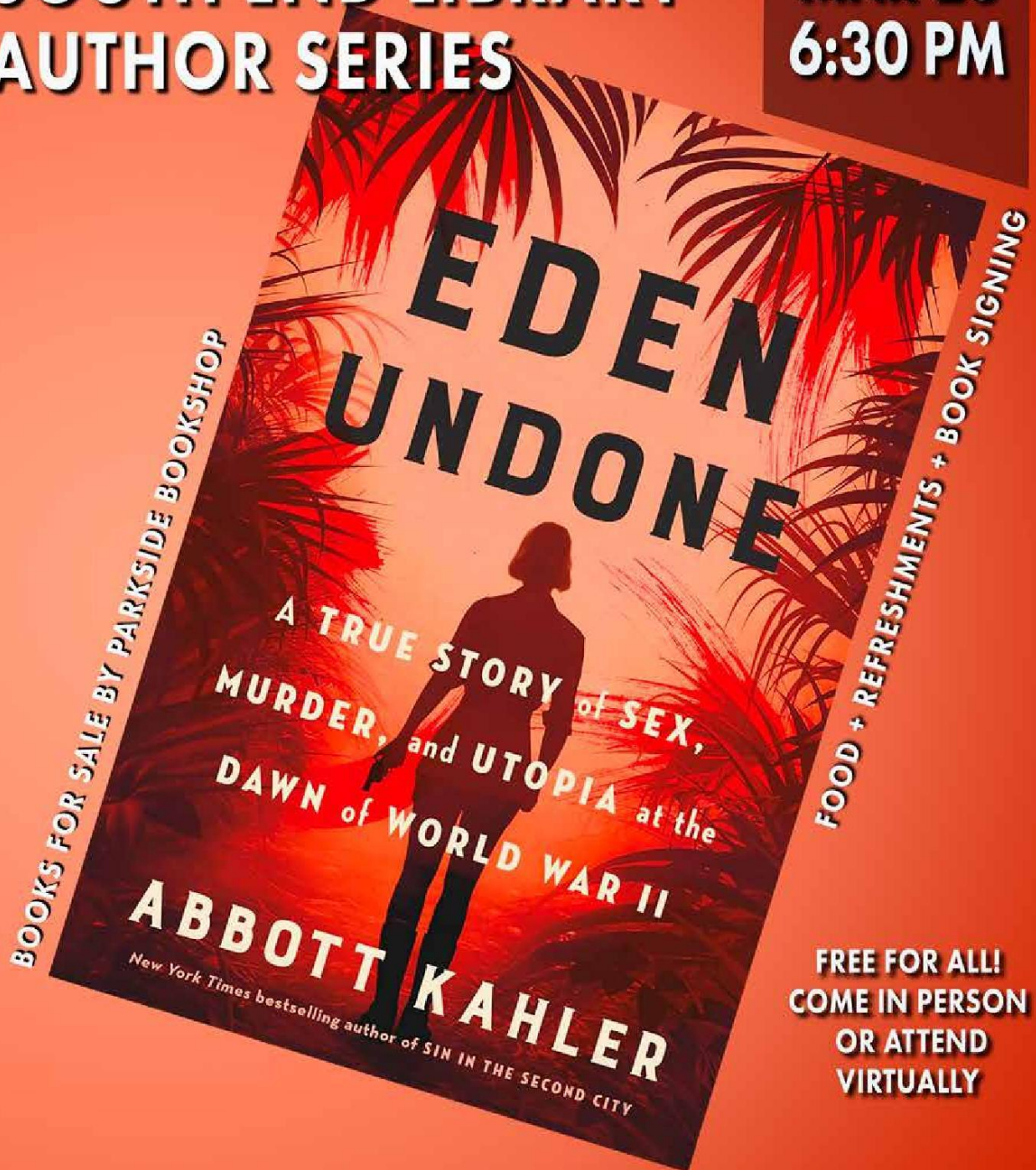


LETTERS POLICY

To be considered for publication, letters must be no longer than 500 words; refrain from extreme personal attacks; be signed and include an address and daytime telephone number. Writers should refrain from making incorrect statements since they may be barred from future issues. Deadline is noon Tuesday for Thursday's paper. To send us letters: Mail to PO BOX E14, Boston, MA 02127; E-mail: letters@southendnews.com

SOUTH END LIBRARY AUTHOR SERIES

**MAR 26
6:30 PM**



**FREE FOR ALL!
COME IN PERSON
OR ATTEND
VIRTUALLY**

Union Church Connection Room 485 Columbus Ave



**FRIENDS OF THE
SOUTH END
LIBRARY**



**BOSTON
PUBLIC
LIBRARY**

LEGAL NOTICES

INFORMAL PROBATE PUBLICATION NOTICE	Commonwealth of Massachusetts The Trial Court Probate and Family Court
In the Estate of: Theresia Indriati Kuntjoro Also Known as: Indriati Kuntjoro Date of Death: June 12, 2024	
	Docket No. SU25P0341EA
To all persons interested in the above captioned estate, by Petitioner Tania Harsono of Boston MA . Tania Harsono of Boston MA , has been informally appointed as the Personal Representative of the estate to serve with without surety on the bond	Suffolk Probate and Family Court 24 New Chardon Street Boston, MA 02114 (617) 788-8300
The estate is being administered under informal procedure by the Personal Representative under the Massachusetts Uniform Probate Code without supervision by the Court. Inventory and accounts are not required to be filed with the Court, but interested parties are entitled to notice regarding the administration from the Personal Representative and can petition the Court in any matter relating to the estate, including distribution of assets and expenses of administration. Interested parties are entitled to petition the Court to institute formal proceedings and to obtain orders terminating or restricting the powers of Personal Representatives appointed under informal procedure. A copy of the Petition and Will, if any, can be obtained from the Petitioner.	

ORDER FOR SERVICE BY PUBLICATION & MAILING	Commonwealth of Massachusetts The Trial Court Probate and Family Court
Paul Harrington vs. Colleen Mc Guire	
Upon motion of plaintiff for an order directing the defendant to appear, plead, or answer, in accordance with Mass. R.Civ.P./Mass. R.Dom. Rel. P. Rule 4, it appearing to the court that this is an action for Divorce 1B.	Docket No. SU25D0041DR Suffolk Probate and Family Court 24 New Chardon Street Boston, MA 02114 (617) 788-8300
Pursuant to Supplemental Probate Court Rule 411, an Automatic Restraining Order has been entered against the above named parties. Defendant cannot be found within the Commonwealth and his/her present whereabouts are unknown. Personal service on defendant is therefore not practicable, and defendant has not voluntarily appeared in this action.	
It is Ordered that defendant is directed to appear, plead, answer, or otherwise move with respect to the complaint herein on or before April 09, 2025 . If you fail to do so this Court will proceed to a hearing and adjudication of this matter.	
It is further Ordered that the accompanying summons be published once in the South End News a newspaper published in: P.O. Box E14 Boston, MA 02127 the publication to be 20 days at least before said return day. It is further Ordered that a copy of the summons be mailed to the defendant at his/her last known address by registered or certified mail.	
Date: 2/11/2025 <i>Hon Abbe L. Ross Justice of Probate and Family Court</i>	

CITATION ON PETITION FOR ORDER OF COMPLETE SETTLEMENT	Commonwealth of Massachusetts The Trial Court Probate and Family Court
	Docket No. SU23P2383PM
Estate of: Marie Deus	
A Petition for Order of Complete Settlement has been filed by: Jonathan J. Davey of Quincy, MA requesting that the court enter a formal Decree of Complete Settlement including the allowance of a final account, and other such relief as may be requested in the Petition.	Suffolk Probate and Family Court 24 New Chardon Street Boston, MA 02114 (617)788-8300
You have the right to obtain a copy of the Petition from the Petitioner or at the Court. You have a right to object to this proceeding. To do so, you or your attorney must file a written appearance and objection at this Court before 10:00 a.m. on 04/02/2025.	
This is NOT a hearing date but a deadline by which you must file a written appearance and objection if you object to this proceeding. If you fail to file a timely written appearance and objection followed by an Affidavit of Objections within thirty (30) days of the return, action may be taken without further notice to you.	
WITNESS, Hon. Brian J. Dunn, First Justice of this Court. Date: February 26, 2025 <i>Stephanie L. Everett, Esq, Register of Probate</i>	

DIVORCE SUMMONS BY PUBLICATION AND MAILING	Commonwealth of Massachusetts The Trial Court Probate and Family Court
Paul Harrington vs. Colleen McGuire	
To the Defendant: The Plaintiff has filed a Complaint for Divorce requesting that the Court grant a divorce for IRRETRIEVABLE BREAKDOWN OF THE MARRIAGE This complaint is on file at the Court.	Suffolk Probate & Family Court 24 New Chardon Street Boston, MA 02114
An Automatic Restraining Order has been entered in this matter preventing you from taking any action which would negatively impact the current financial status of either party. SEE Supplemental Probate Court Rule 411.	
You are hereby summoned and required to serve upon: Paul Harrington 601 E 4th St Apt 1 Boston, MA 02127	
your answer, if any, on or before 04/09/2025. If you fail to do so, the court will proceed to the hearing and adjudication of this action. You are also required to file a copy of your answer, if any, in the office of the Register of this Court.	
WITNESS, Hon. Brian J. Dunn, First Justice of this Court. Date: February 14, 2025 <i>Stephanie L. Everett, Esq, Register of Probate</i>	

BOSTON, GET YOUR TAXES DONE FOR FREE

- ✓ MAXIMIZE YOUR REFUND
- ✓ FINANCIAL EDUCATION AVAILABLE
- ✓ ALL ARE WELCOME

Check if you are eligible:
Boston.gov/Tax-Help | 617-635-4500

NEW BIN LOCATIONS!
Turning food waste into compost just got easier!
Boston has 19 Project Oscar Food Waste bins!

Find the bin closest to you, at:
boston.gov/projectoscar

LETTERS POLICY

The South End News welcomes letters to the editor.

All letters must be signed and accompanied by a mailing address and phone number.

Because of space limitations, letters should not be more than 200 words.



e-mail: letters@southendnews.com



Insuring your most cherished possessions



Auto Home Business Condo Pet Insurance

8 Clarendon St Boston 617-437-9400

jjbodner.com